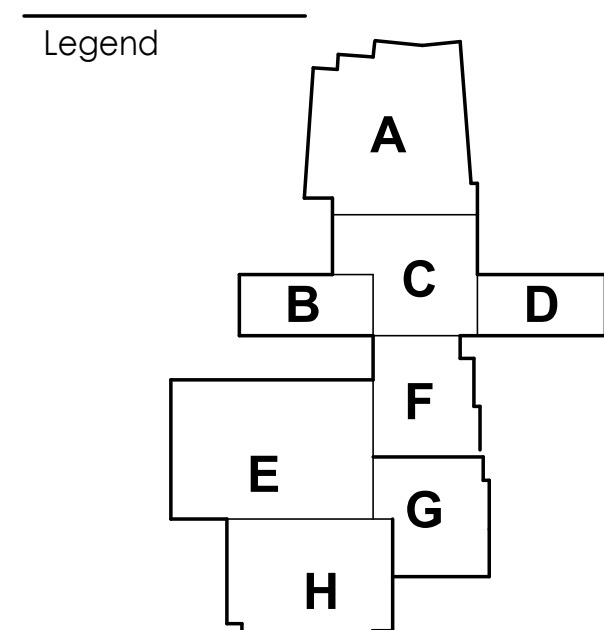
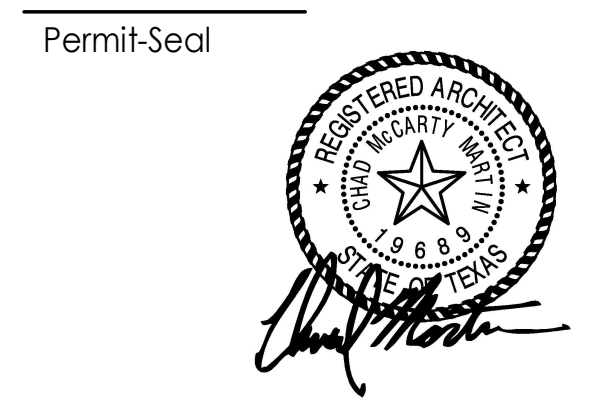


- Consultants**
- CIVIL ENGINEER: PACHECO KOCH CONSULTING ENGINEERS
 - LANDSCAPE ARCHITECT: PACHECO KOCH CONSULTING ENGINEERS
 - STRUCTURAL ENGINEER: AG&E ASSOCIATES, P.L.L.C.
 - FOOD SERVICE: JMK FOODSERVICE CONSULTING AND DESIGN
 - MECHANICAL ENGINEER: B&H ENGINEERS, INC.
 - ELECTRICAL ENGINEER: B&H ENGINEERS, INC.
 - PLUMBING ENGINEER: B&H ENGINEERS, INC.
 - TECHNOLOGY CONSULTANT: MOYE CONSULTING



Notes

84	RFI 247	AS	AS	11/03/2020
25	ASI 034	By	Appd	12/13/19
Revision		By	Appd	YYYY.MM.DD
PLANS FOR BIDDING AND CONSTRUCTION		KAL/ES	KS	2018.10.03
Issued		By	Appd	YYYY.MM.DD



Client/Project
Dallas ISD

Franklin D. Roosevelt High School
BP #15 ORG# 013
525 Bonnie View Rd
Dallas, TX 75203

Title
EXTERIOR ELEVATIONS

Project No. 21.4000470
Revision 84

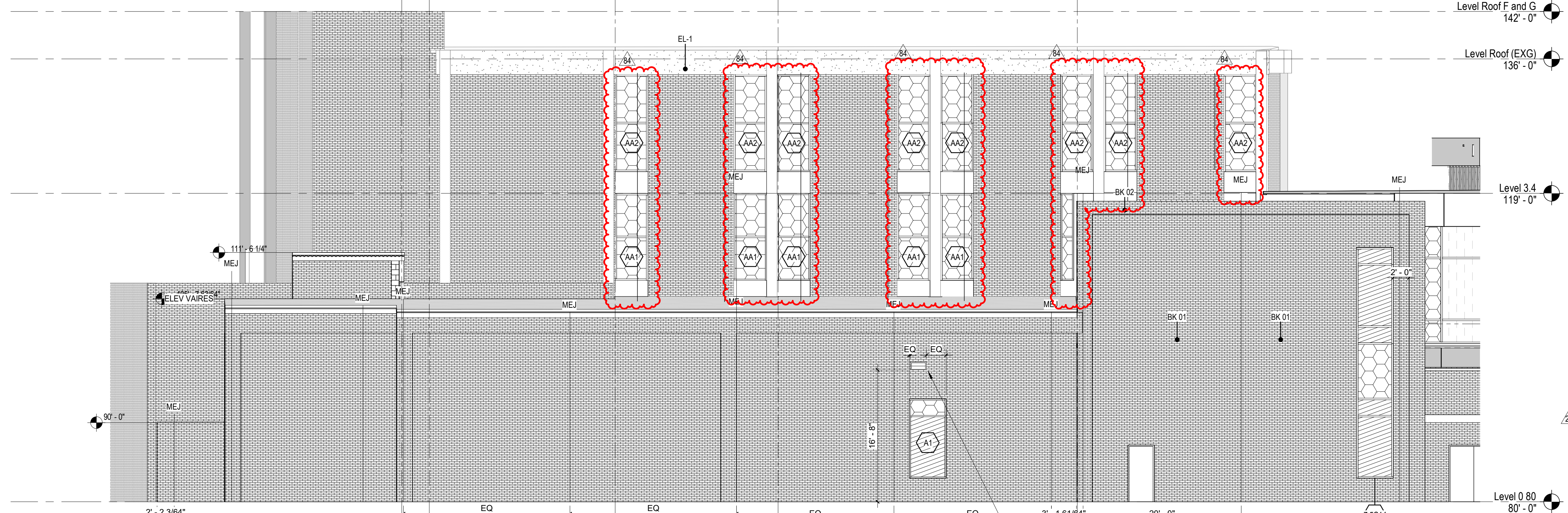
Scale As indicated
Drawing No. A203

GLAZING KEY

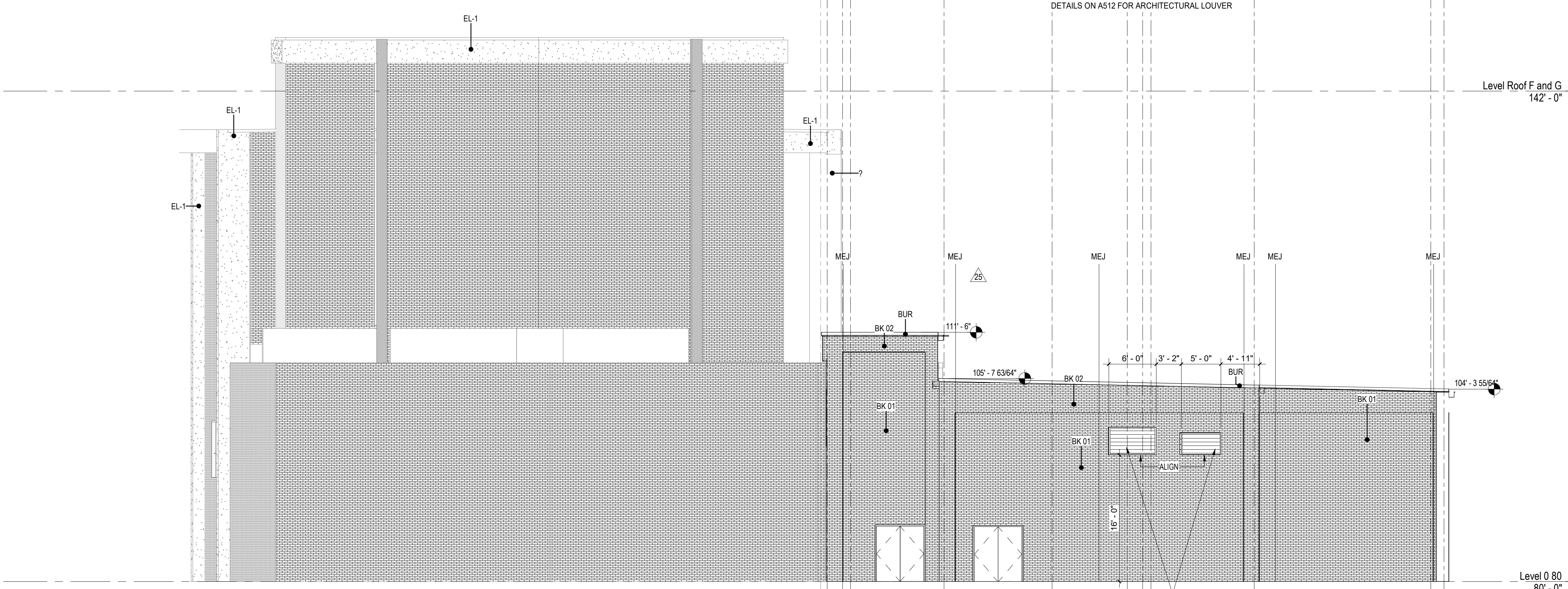
NAME	DESCRIPTION
GLZ 1	CLEAR SAFETY GLASS
GLZ 2	SOLARBAN 90 CLEAR (2) + CLEAR INSULATED GLASS
GLZ 3	SOLARBAN 90 CLEAR (2) + CLEAR WITH WARM GREY (4) SPANDREL INSULATED GLASS
GLZ 4	SOLARBAN 90 CLEAR (2) + CLEAR WITH WARM GREY (4) FRT INSULATED GLASS
GLZ 5	INSULATED TRANSLUCENT
GLZ 6	NEW ALUMINUM COMPOSITE METAL PANEL - REF MATERIALS SCHED
GLZ 7	NEW WHITE SPANDREL PANEL - REF MATERIALS SCHED
GLZ 8	REPLACE EXG WITH - LIGHT BLUE SPANDREL GLASS REF MATERIALS SCHED
GLZ 9	SPANDREL GLASS - EXISTING TO REMAIN
GLZ 10	CLEAR GLASS - EXISTING TO REMAIN
+	PORTION OF CURTAINWALL TO BE DEMOLISHED - NEW ARCHORS ESTABLISHED TO TOP. REFERENCE PLAN AND ELEV FOR RECONSTRUCTION OF THIS AREA

FRAME TYPE LEGEND

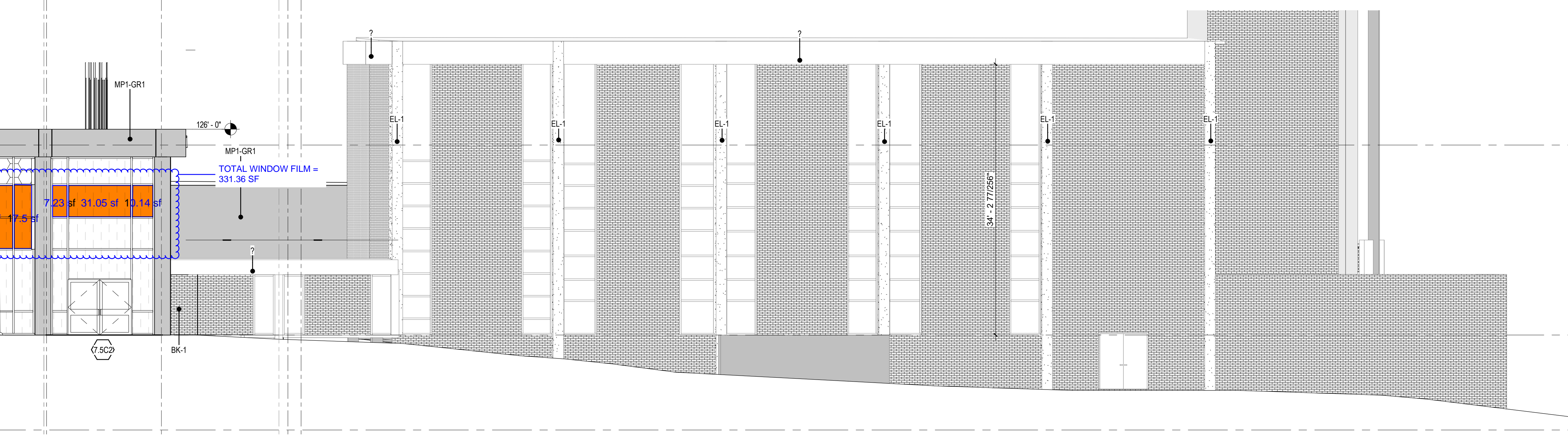
SH	STEEL (HM) FRAME TYPE
AF	ALUMINUM (STOREFRONT) FRAME TYPE
7SCA	7.5" CURTAINWALL FRAME TYPE WITH STRUCTURAL BRACE. REF. STRUCTURES
6CF	6" CURTAINWALL FRAME TYPE WITH STRUCTURAL BRACE. REF. STRUCTURES
CW	EXISTING CURTAINWALL



B3 FINE ARTS/STORM SHELTER ELEVATION - W
A203 1/8" = 1'-0"



D3 MAIN FINE ARTS ELEVATION - N
A203 1/8" = 1'-0"



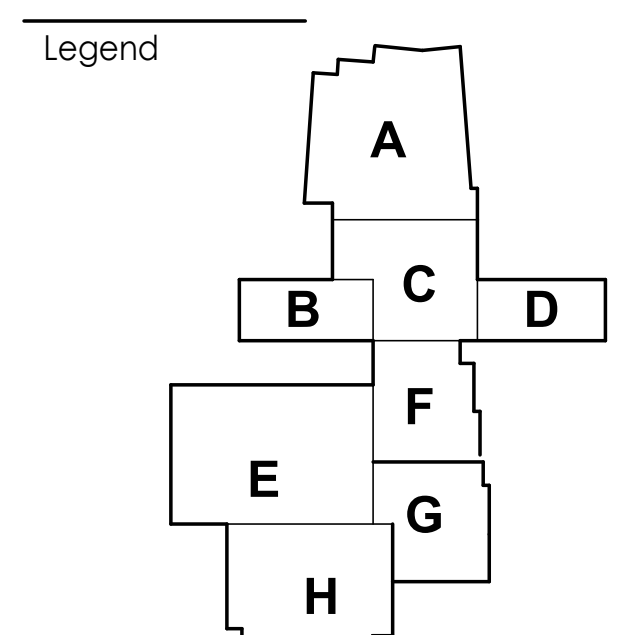
F1 MAIN LIBRARY ELEVATION - E
A203 1/8" = 1'-0"

B:\A\203\21.4000470_D3D_Franklin_D_Roosevelt_High_School_ARCH_ELEVATIONS.dwg 11/03/2020 2:28:29 PM

- Consultants**
- CIVIL ENGINEER: PACHECO KOCH CONSULTING ENGINEERS
 - LANDSCAPE ARCHITECT: PACHECO KOCH CONSULTING ENGINEERS
 - STRUCTURAL ENGINEER: AG&E ASSOCIATES, P.L.L.C.
 - FOOD SERVICE: JMK FOODSERVICE CONSULTING AND DESIGN
 - MECHANICAL ENGINEER: B&H ENGINEERS, INC.
 - ELECTRICAL ENGINEER: B&H ENGINEERS, INC.
 - PLUMBING ENGINEER: B&H ENGINEERS, INC.
 - TECHNOLOGY CONSULTANT: MOYE CONSULTING

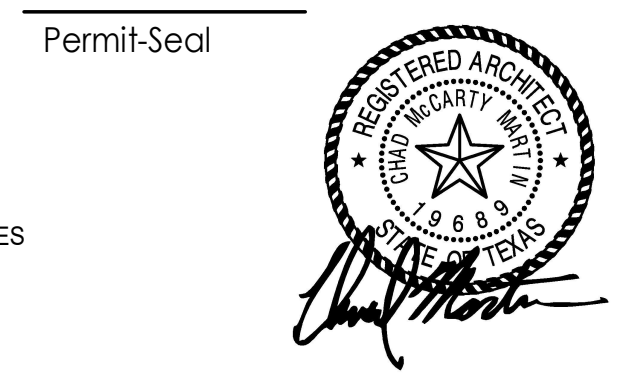
NAME	DESCRIPTION
GLZ 1	CLEAR SAFETY GLASS
GLZ 2	SOLARBAN 90 CLEAR (2) + CLEAR INSULATED GLASS
GLZ 3	SOLARBAN 90 CLEAR (2) + CLEAR WITH WARM GREY (4) SPANDREL INSULATED GLASS
GLZ 4	SOLARBAN 90 CLEAR (2) + CLEAR WITH WARM GREY (4) FRIT INSULATED GLASS
GLZ 5	INSULATED TRANSLUCENT
GLZ 6	NEW ALUMINUM COMPOSITE METAL PANEL - REF MATERIALS SCHED
GLZ 7	NEW WHITE SPANDREL PANEL - REF MATERIALS SCHED
GLZ 8	REPLACE EXG WITH LIGHT BLUE SPANDREL GLASS REF MATERIALS SCHED
GLZ 13	SPANDREL GLASS - EXISTING TO REMAIN
GLZ 14	CLEAR GLASS - EXISTING TO REMAIN
+	PORTION OF CURTAINWALL TO BE DEMOLISHED - NEW ANCHORS ESTABLISHED TO TOP. REFERENCE PLAN AND ELEV FOR RECONSTRUCTION OF THIS AREA.

FRAME TYPE	DESCRIPTION
SR	STEEL (HM) FRAME TYPE
AR	ALUMINUM (STOREFRONT) FRAME TYPE
7SC#	7.5" CURTAINWALL FRAME TYPE WITH STRUCTURAL BRACE, REF. STRUCTURES
6C#	6" CURTAINWALL FRAME TYPE WITH STRUCTURAL BRACE, REF. STRUCTURES
CW#	EXISTING CURTAINWALL



Notes

Revision	By	Appd	Date
75	RFL 236		10/8/2020
Revision			YYYYMMDD
PLANS FOR BIDDING AND CONSTRUCTION	KAL/ES	KS	2018.10.03
Issued			YYYYMMDD

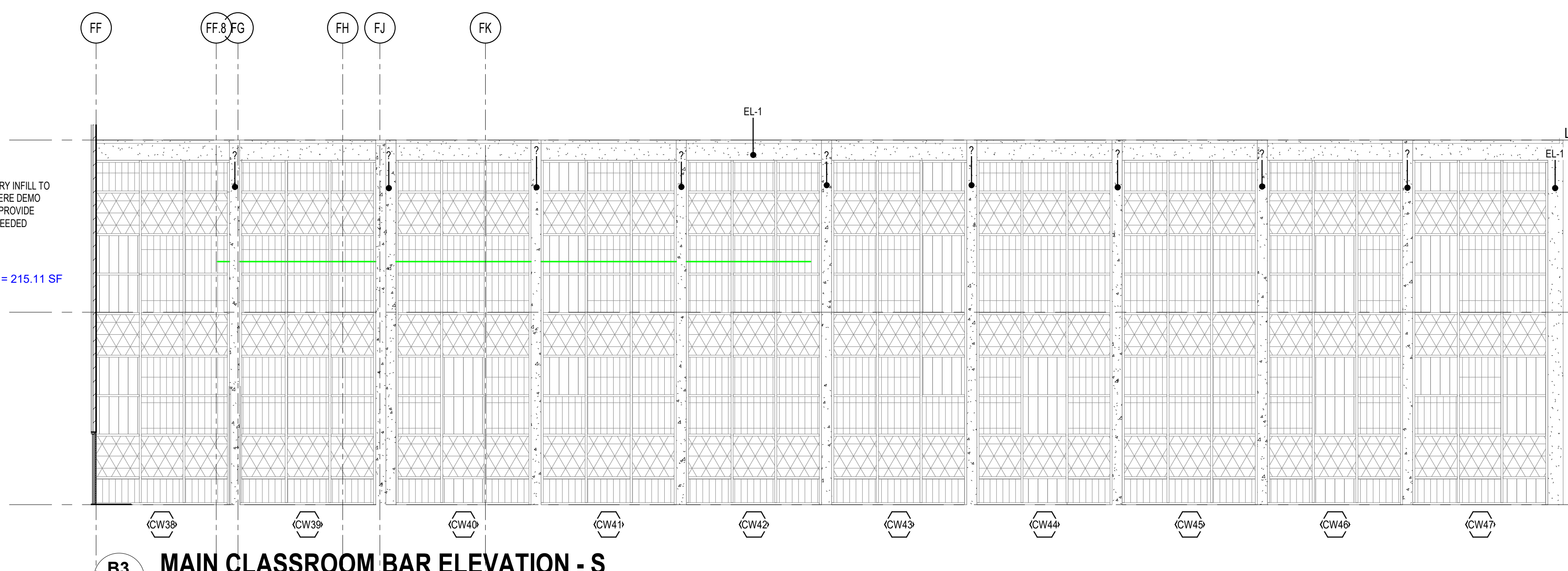


Client/Project
Dallas ISD

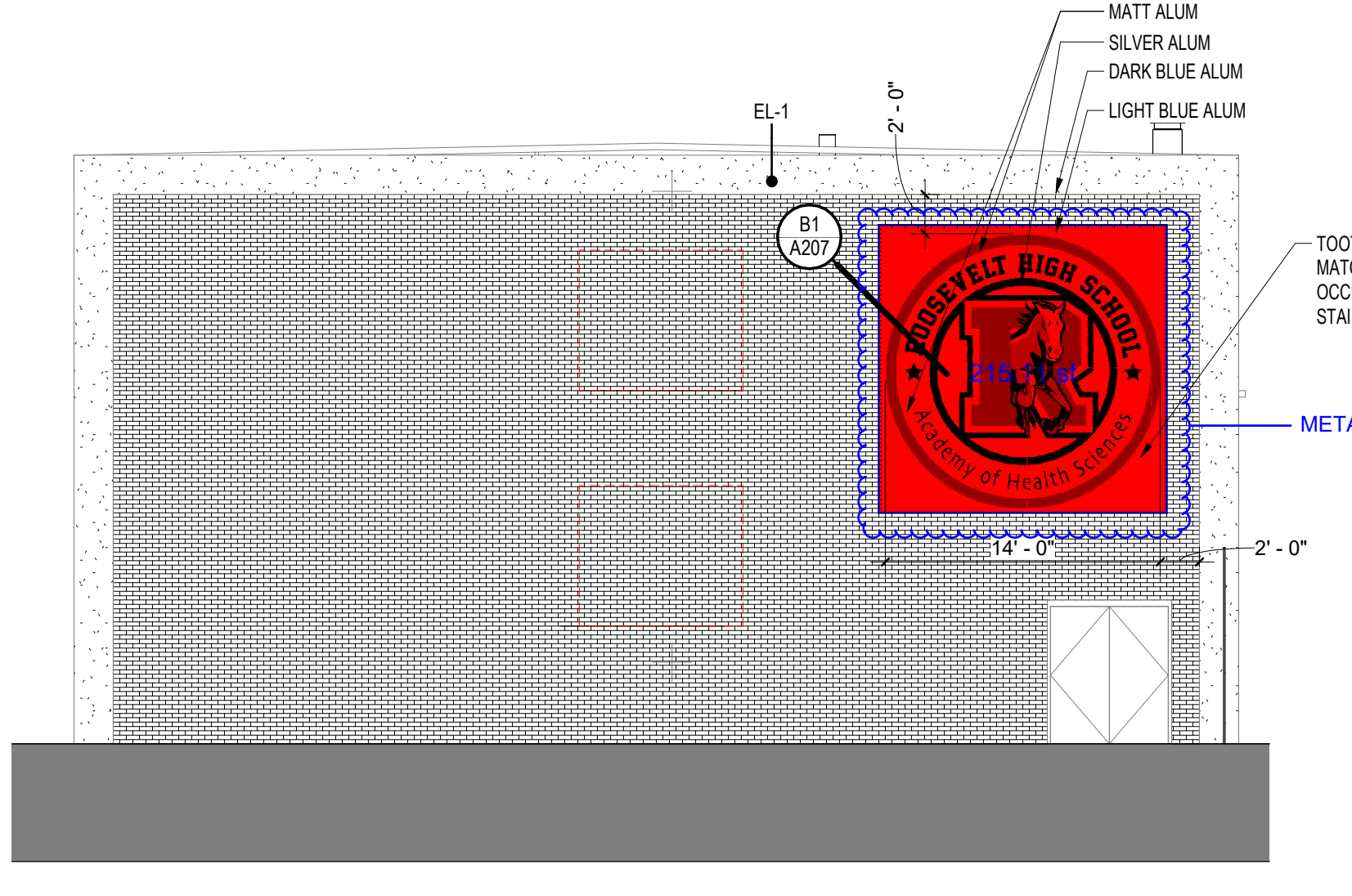
Franklin D. Roosevelt High School
BP #15 ORG# 013
525 Bonnie View Rd
Dallas, TX 75203

Title
EXTERIOR ELEVATIONS

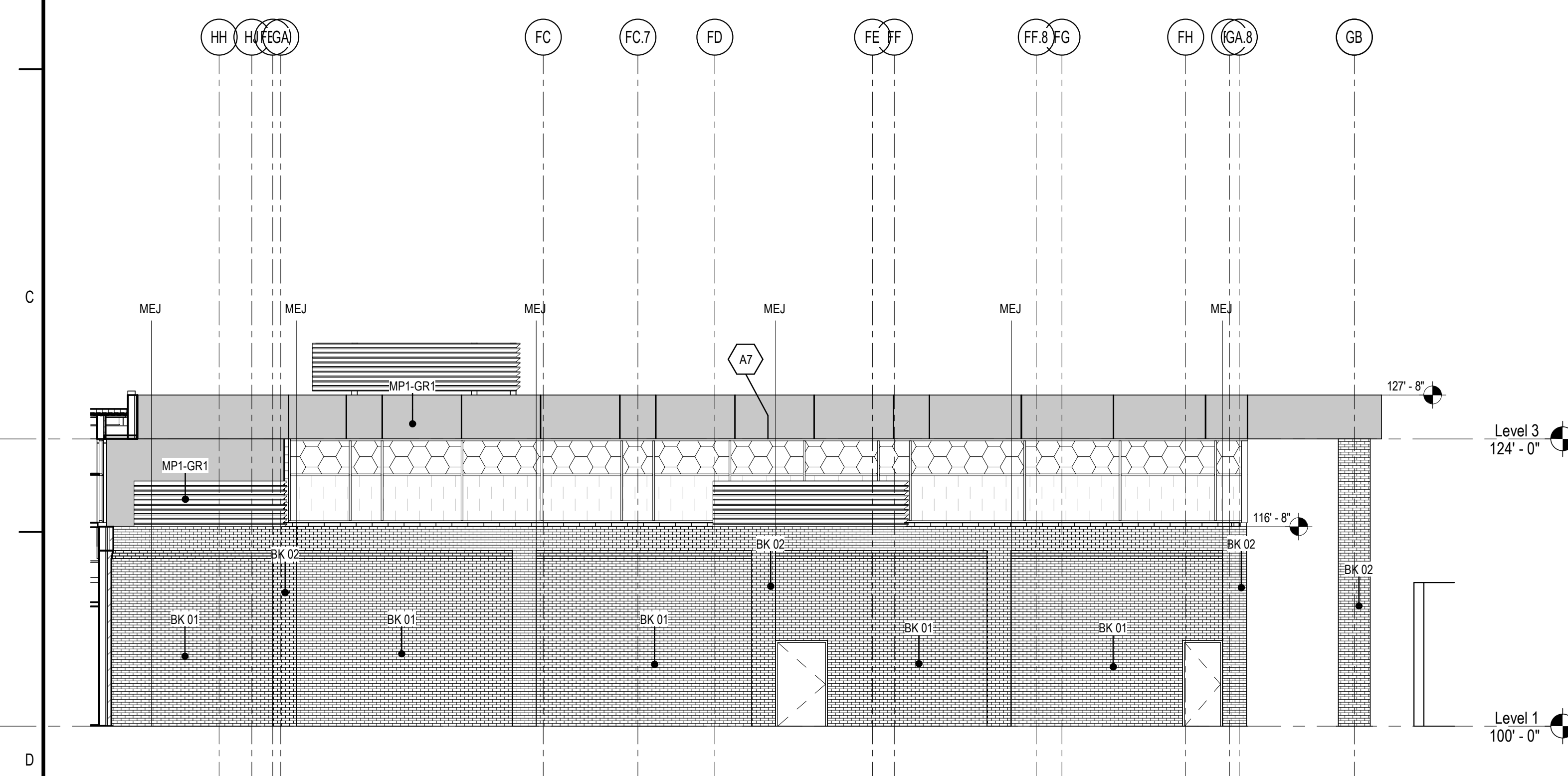
Project No. 21.4000470 Scale As indicated
Revision 75 Drawing No. A204



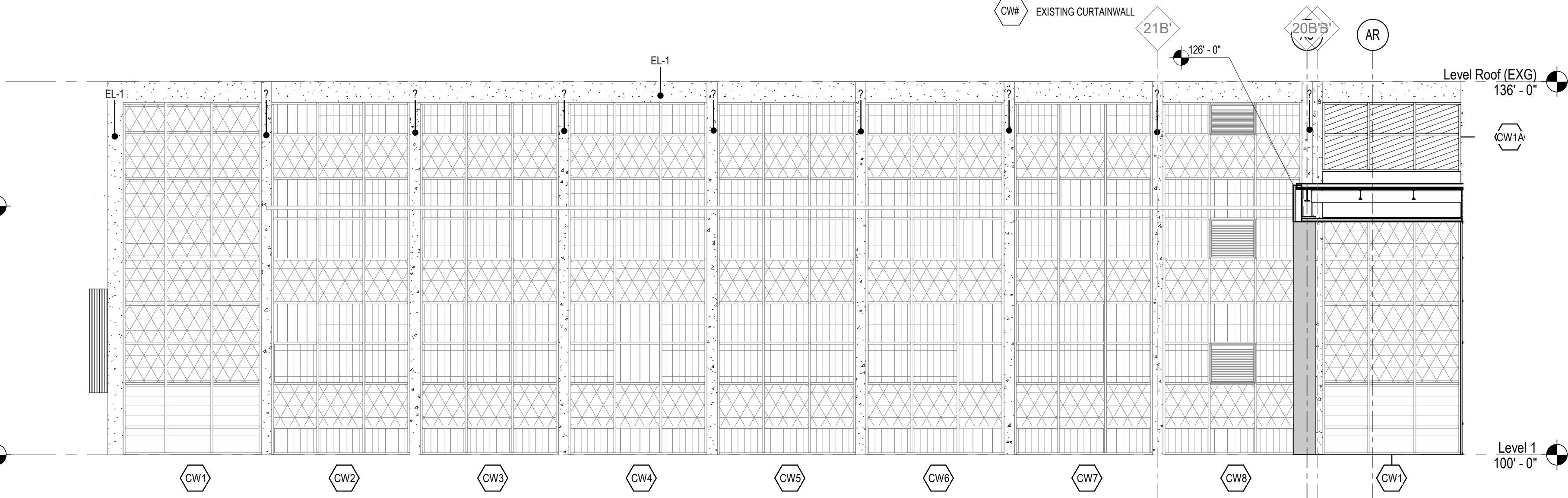
B3 MAIN CLASSROOM BAR ELEVATION - S
A204 1/8" = 1'-0"



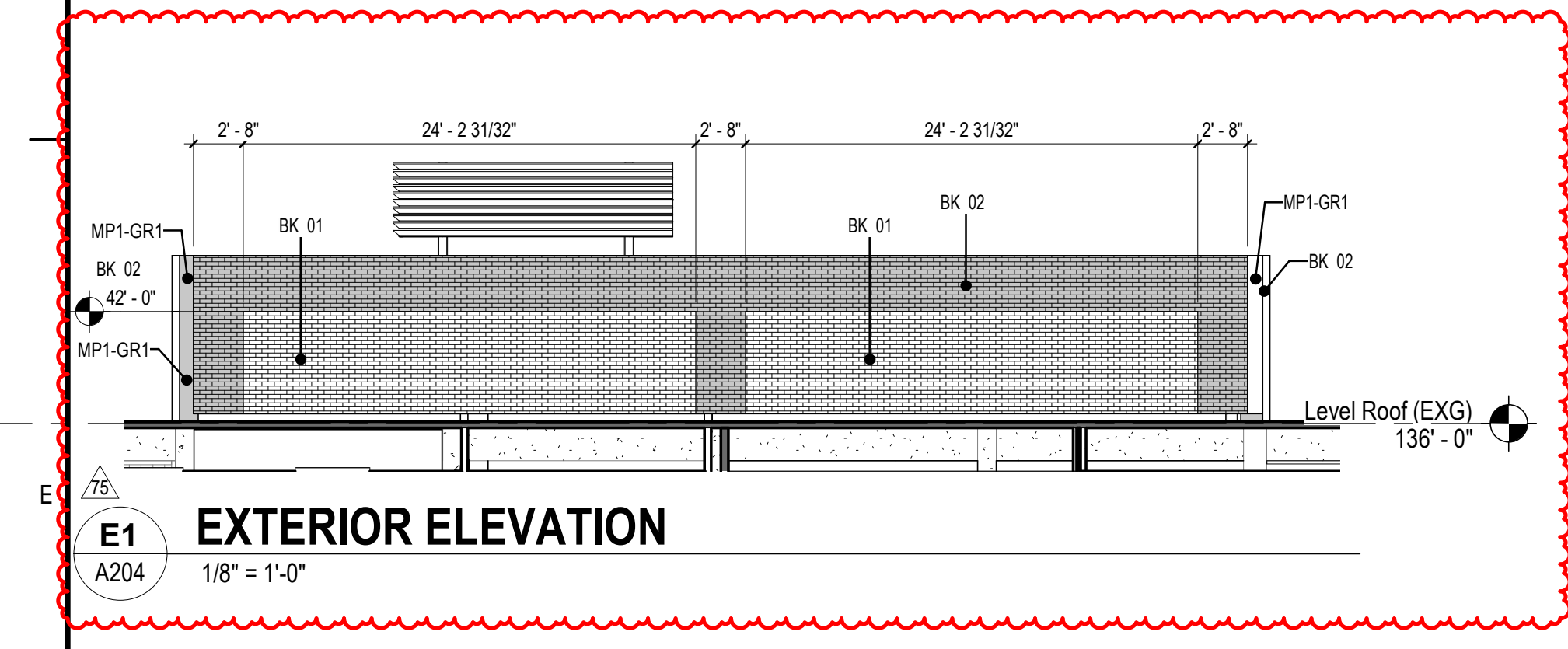
B1 EXISTING CLASSROOM BAR ELEVATION - E
A204 1/8" = 1'-0"



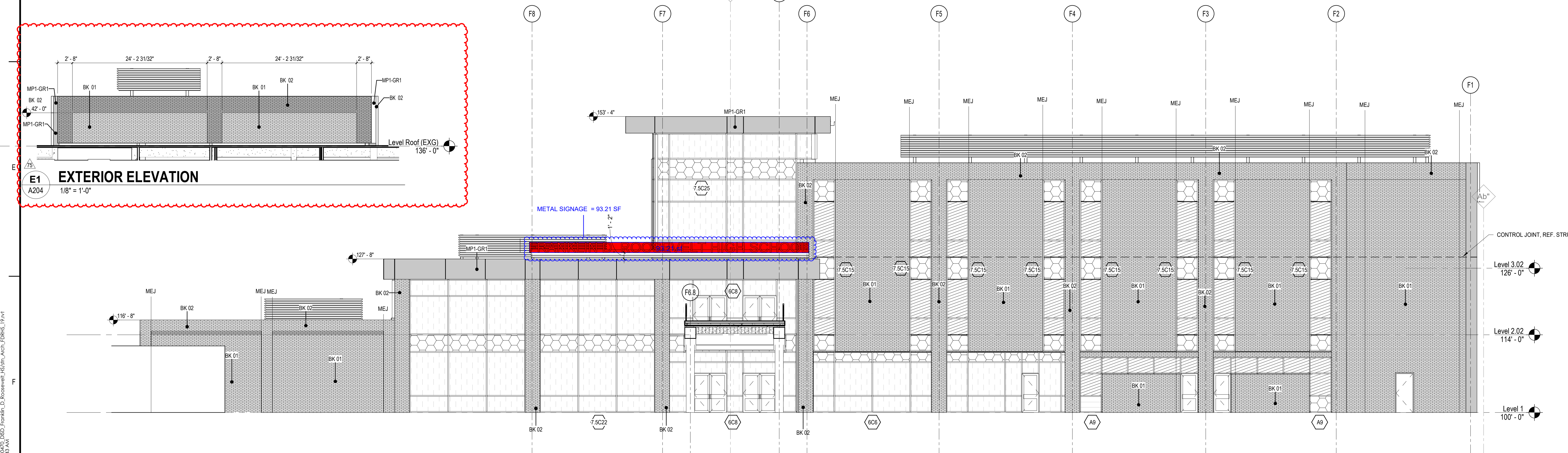
D1 FOOD SERVICE ELEVATION - S
A204 1/8" = 1'-0"



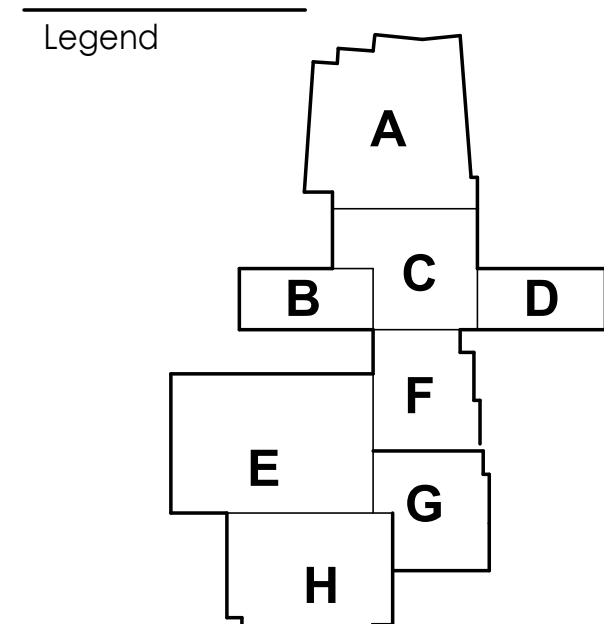
D5 MAIN CLASSROOM BAR ELEVATION - N
A204 1/8" = 1'-0"



E1 EXTERIOR ELEVATION
A204 1/8" = 1'-0"



F1 MAIN ENTRY ELEVATION - E
A204 1/8" = 1'-0"



Notes

Revision	By	App'd	Date
76	ASI 468.3		10/12/2020
47	RFI 172 GYM WALL DEFICIENCY		5/19/2020
31	ASI 038 / RFI 78	CM	4/11/2020
		App'd	YYYY.MM.DD

PLANS FOR BIDDING AND CONSTRUCTION
Issued

Permit-Seal

Client/Project
Dallas ISD

Franklin D. Roosevelt High School
BP #15 ORG# 013
525 Bonnie View Rd
Dallas, TX 75203

Title
EXTERIOR ELEVATIONS

Project No. 214000470
Scale As indicated
Revision 76
Drawing No.

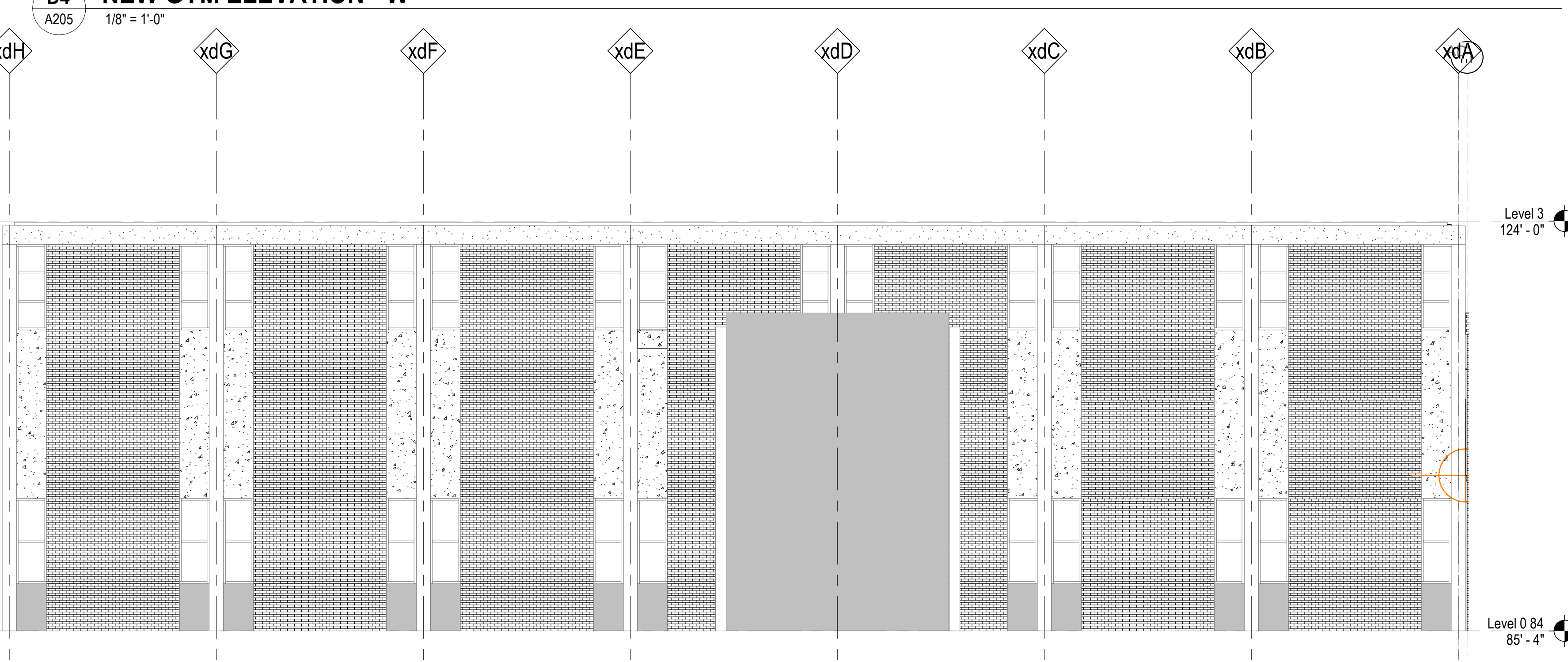
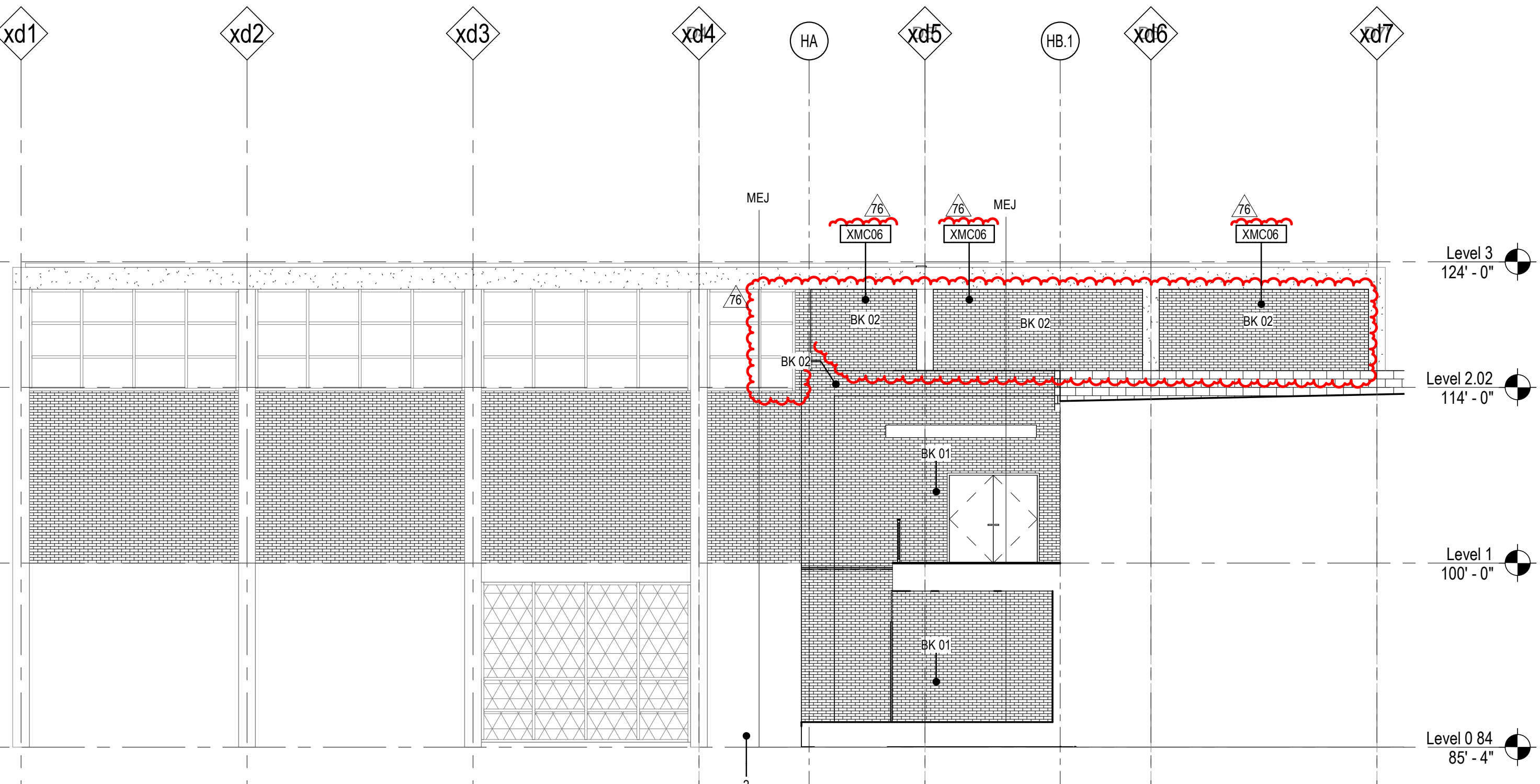
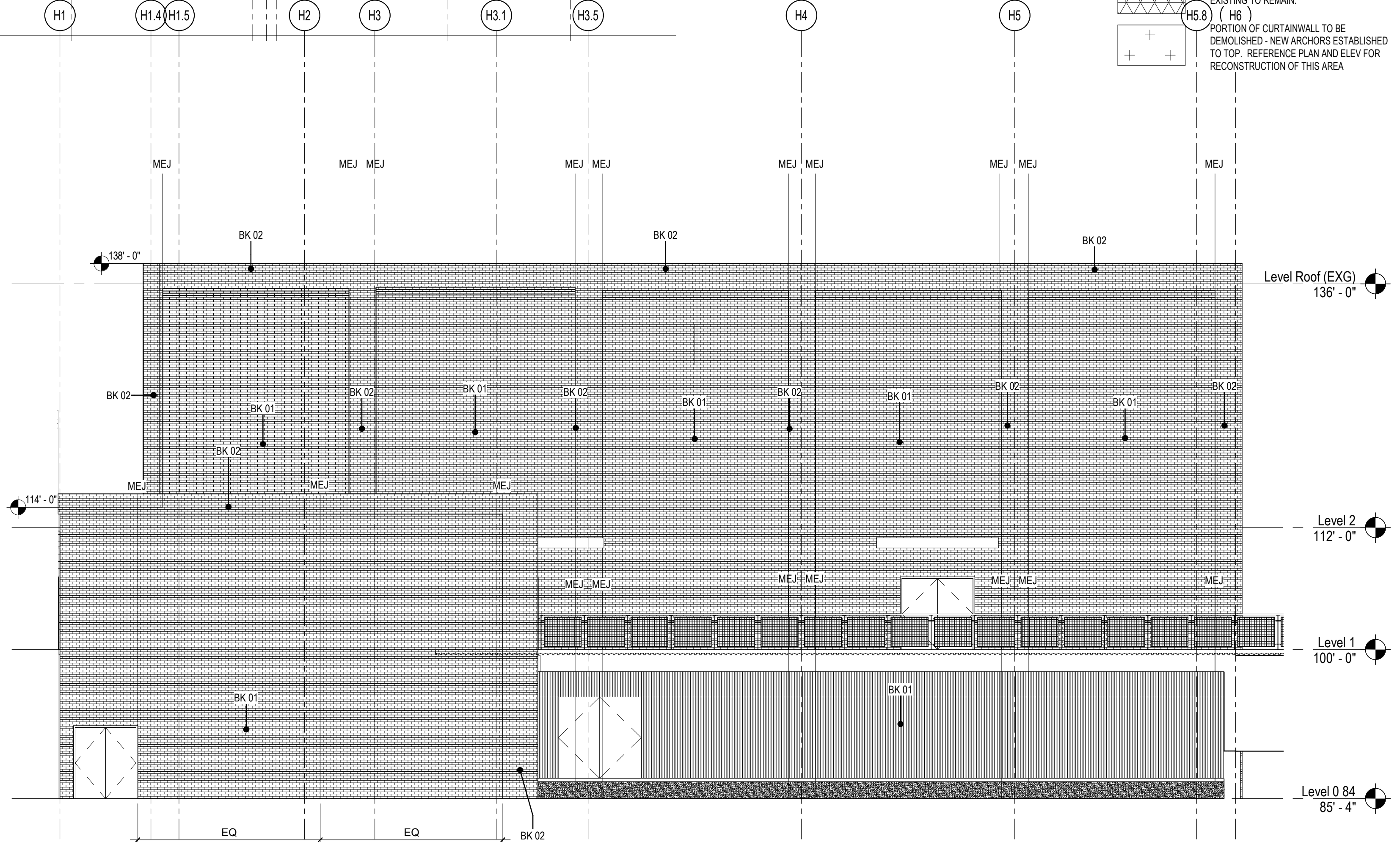
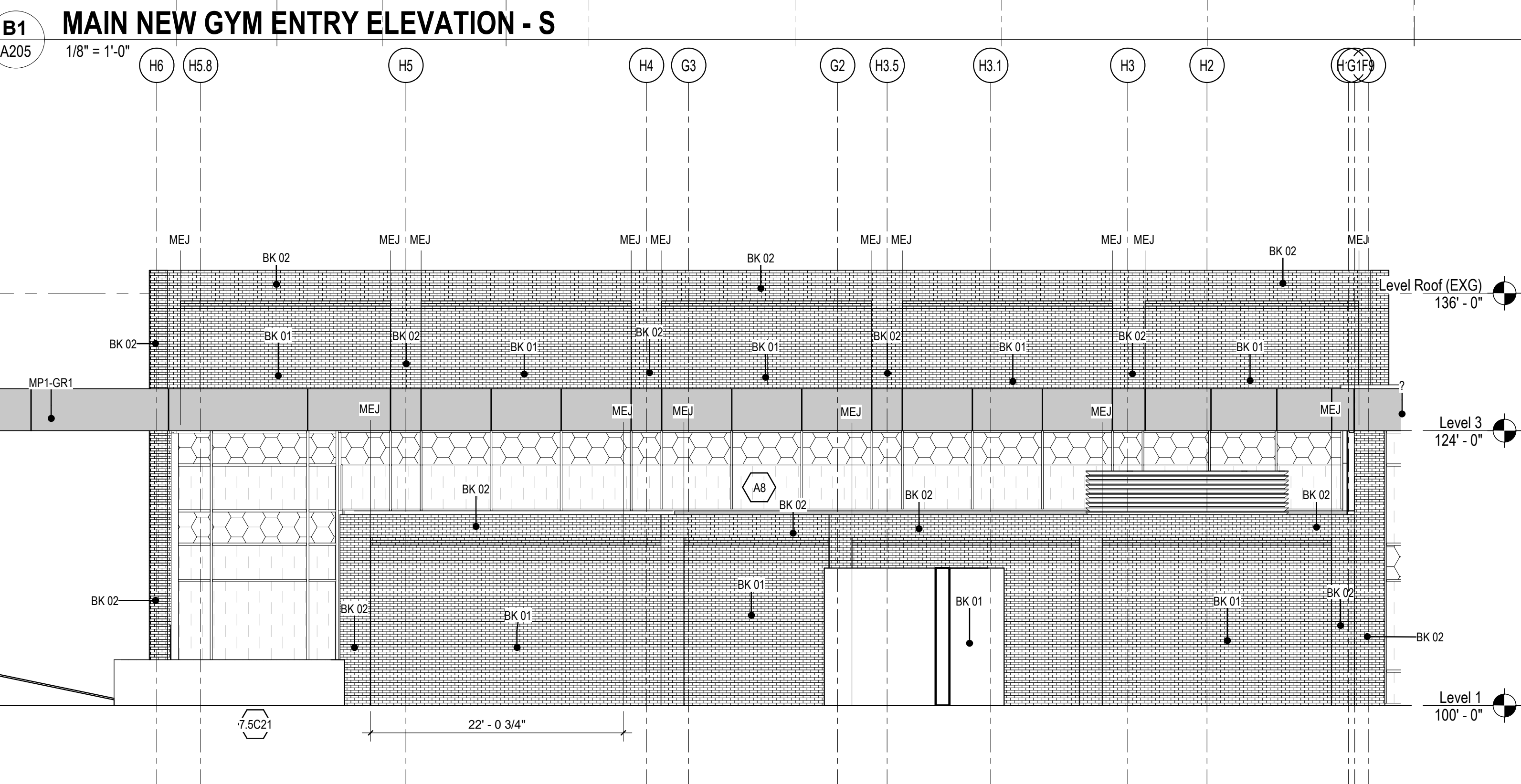
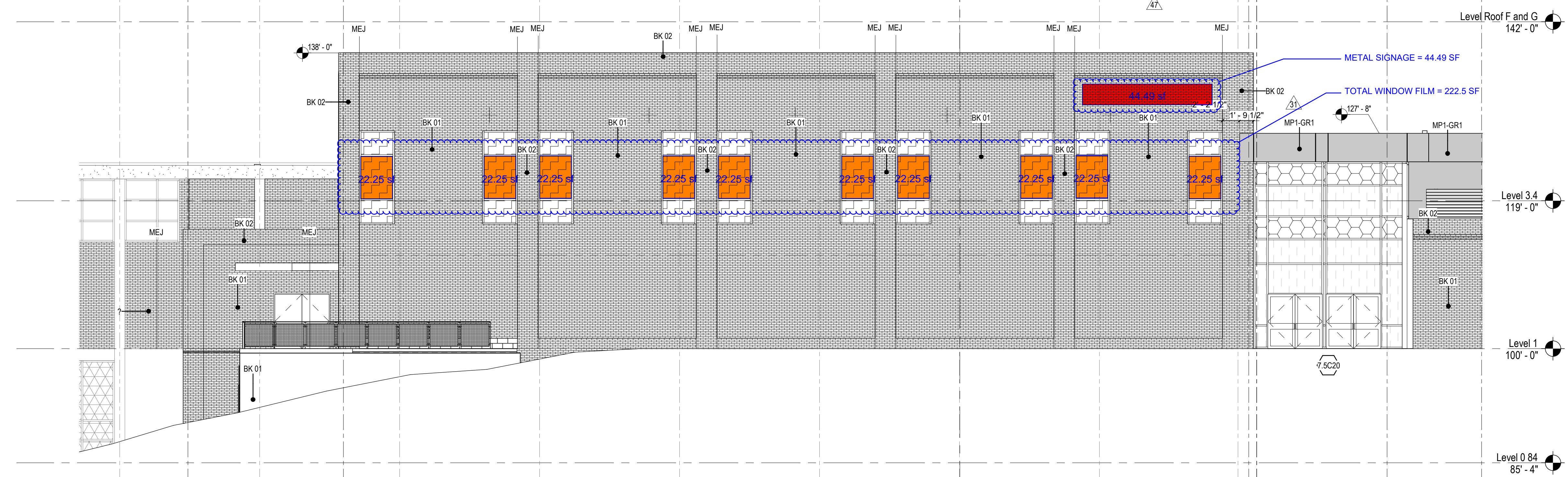
FRAME TYPE LEGEND

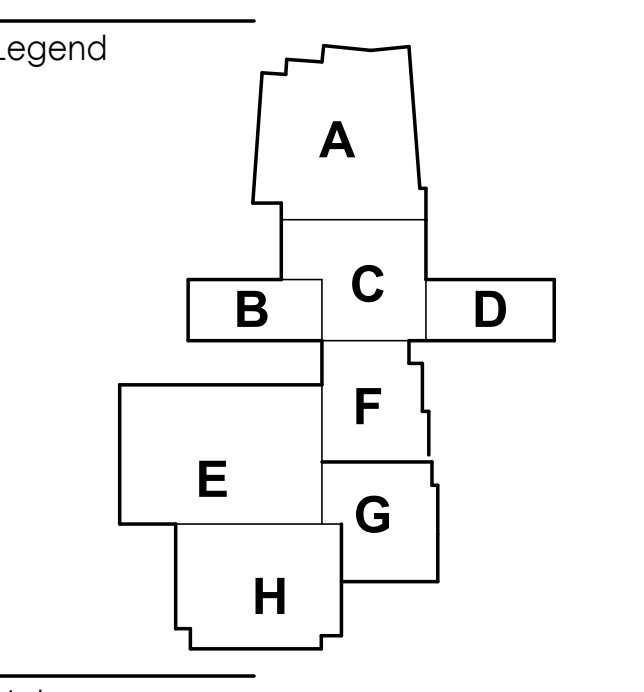
- SA STEEL (HM) FRAME TYPE
- AA ALUMINUM (STOREFRONT) FRAME TYPE
- 7SC 7.5" CURTAINWALL FRAME TYPE WITH STRUCTURAL BRACE, REF. STRUCTURES
- 6CA 6" CURTAINWALL FRAME TYPE WITH STRUCTURAL BRACE, REF. STRUCTURES
- CWV EXISTING CURTAINWALL

GLAZING KEY

NAME	DESCRIPTION
GLZ 1	CLEAR SAFETY GLASS
GLZ 2	SOLARBAN 90 CLEAR (2) - CLEAR INSULATED GLASS
GLZ 3	SOLARBAN 90 CLEAR (2) - CLEAR WITH WARM GREY (4) SPANDREL INSULATED GLASS
GLZ 4	SOLARBAN 90 CLEAR (2) - CLEAR WITH WARM GREY (4) FRIT INSULATED GLASS
GLZ 5	INSULATED TRANSLUCENT
GLZ 6	NEW ALUMINUM COMPOSITE METAL PANEL - REF MATERIALS SCHED
GLZ 7	NEW WHITE SPANDREL PANEL - REF MATERIALS SCHED
GLZ 8	REPLACE EXG WITH - LIGHT BLUE SPANDREL GLASS REF MATERIALS SCHED
GLZ 9	SPANDREL GLASS - EXISTING TO REMAIN
GLZ 14	CLEAR GLASS - EXISTING TO REMAIN

(H5.8) (H6)
PORTION OF CURTAINWALL TO BE DEMOLISHED - NEW ANCHORS ESTABLISHED TO TOP. REFERENCE PLAN AND ELEV FOR RECONSTRUCTION OF THIS AREA

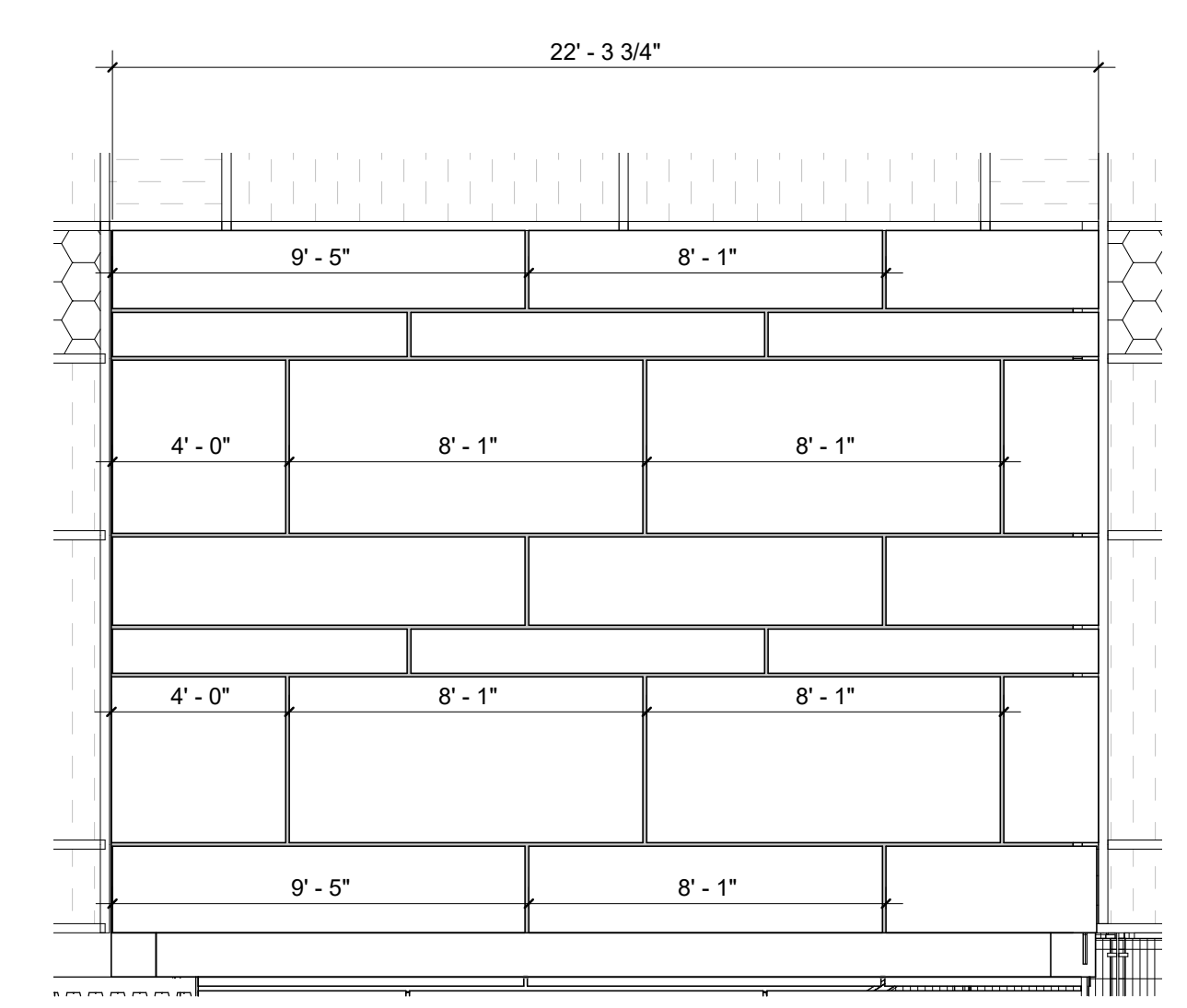
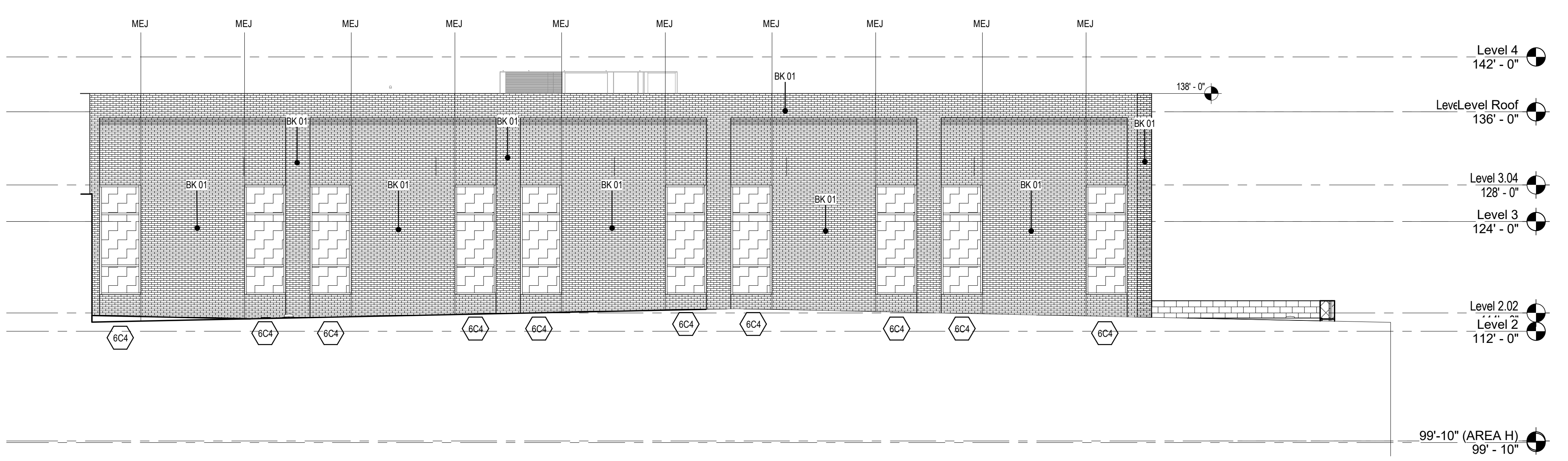
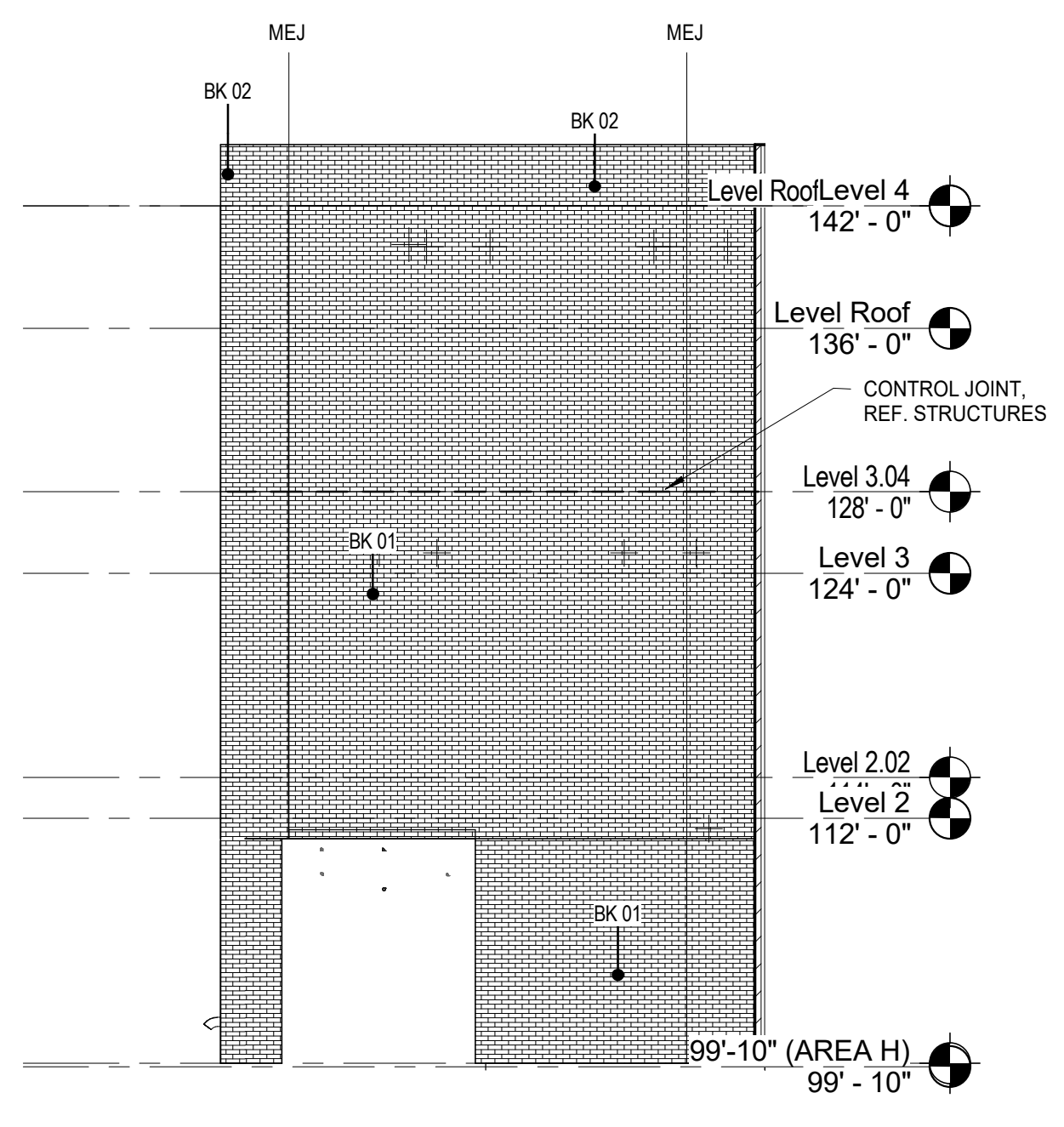
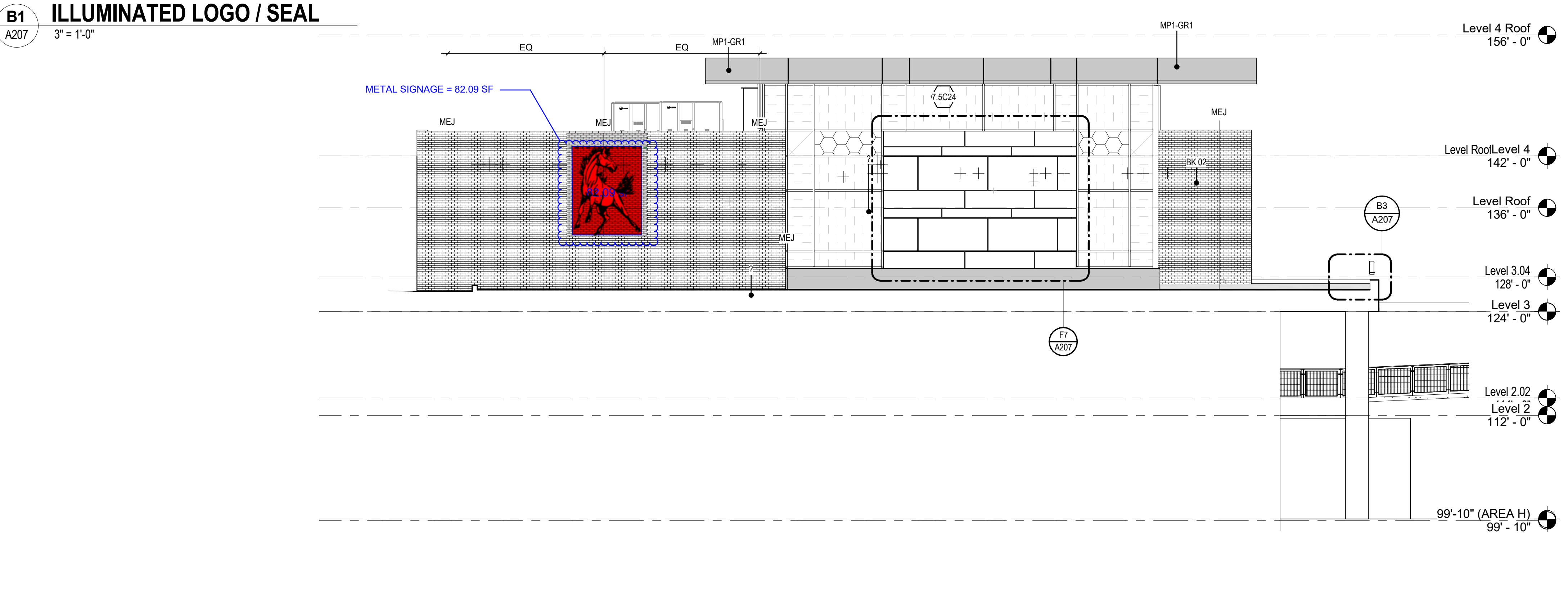
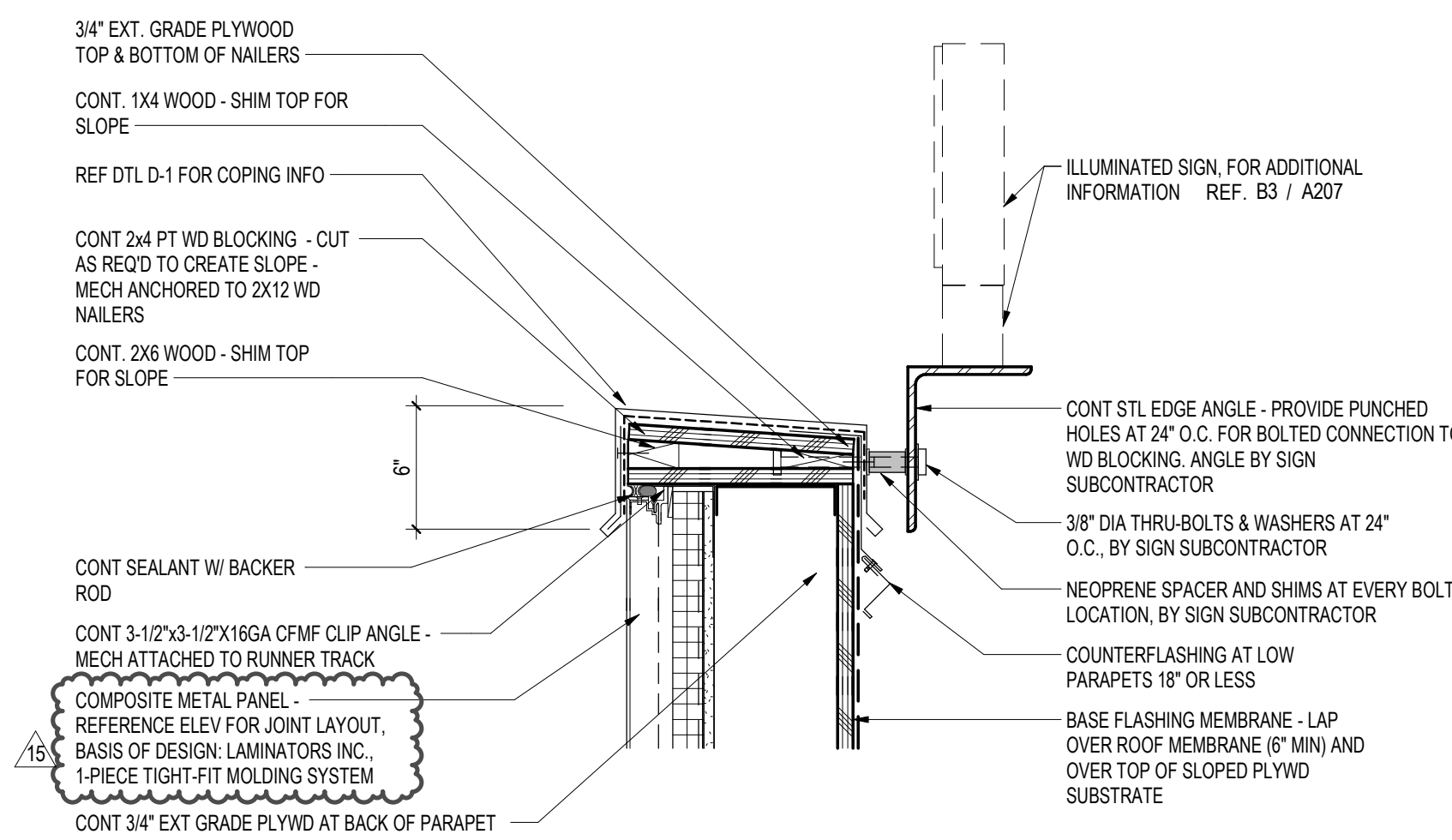
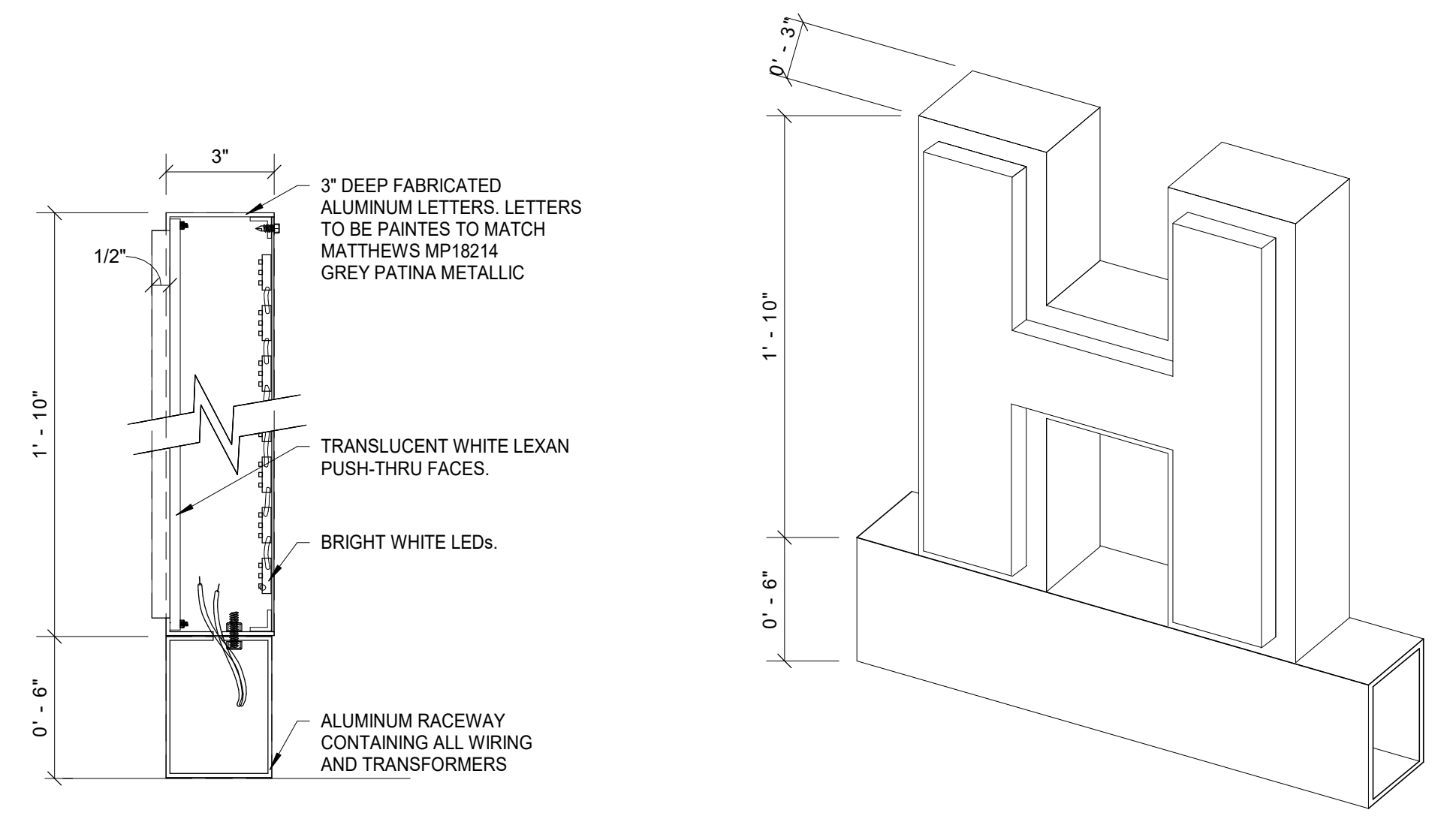
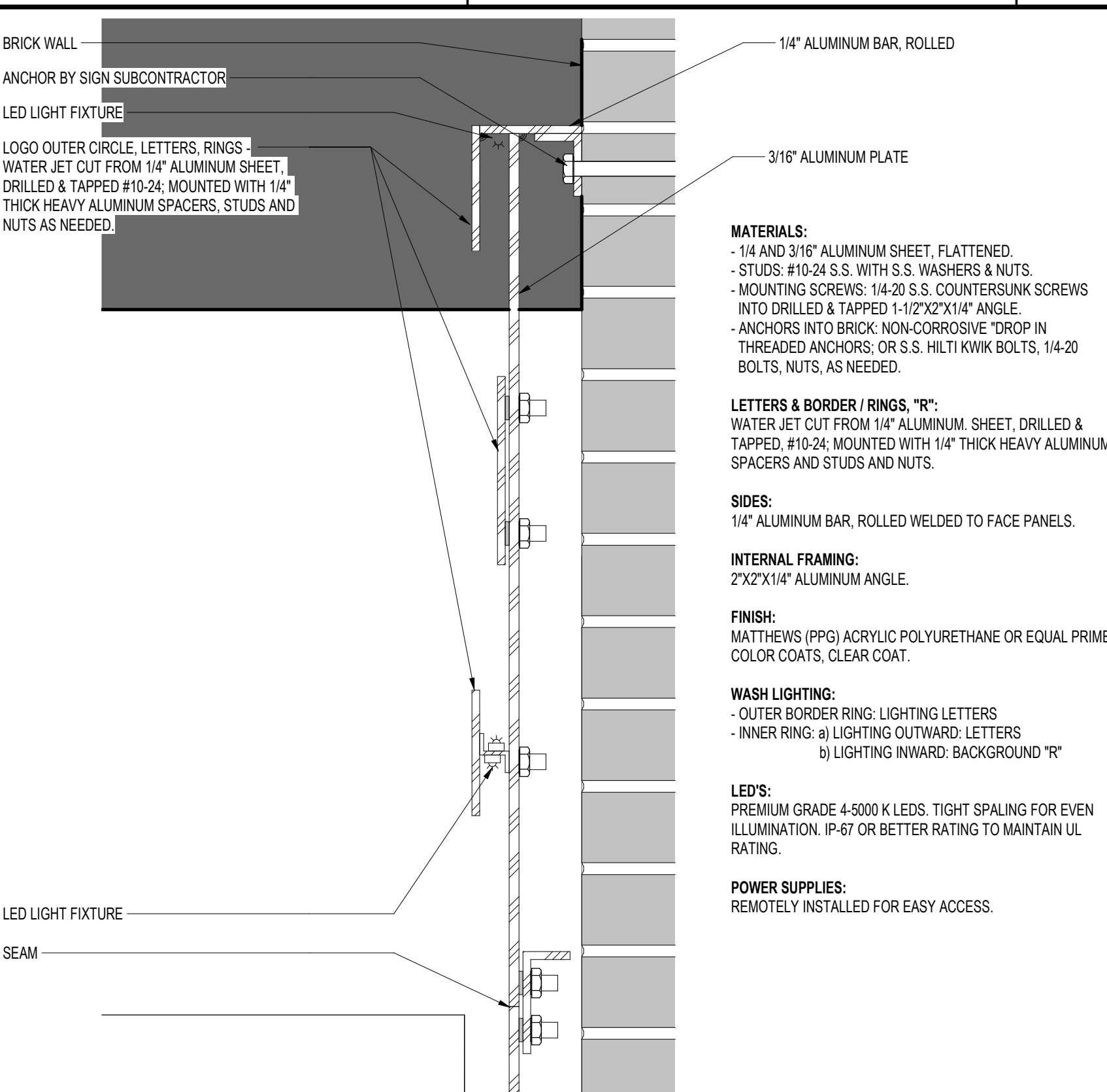




Notes

NAME	DESCRIPTION
GLZ 1	CLEAR SAFETY GLASS
GLZ 2	OPAL BLUE TINTED INSULATED
GLZ 3	OPAL BLUE TINTED INSULATED SPANDREL
GLZ 4	OPAL BLUE TINTED INSULATED WITH FRIT
GLZ 5	INSULATED TRANSLUCENT
GLZ 6	NEW ALUMINUM COMPOSITE METAL PANEL - REF MATERIALS SCHED
GLZ 7	NEW WHITE SPANDREL PANEL - REF MATERIALS SCHED
GLZ 8	REPLACE EXG WITH - LIGHT BLUE SPANDREL GLASS - REF MATERIALS SCHED
GLZ 9	REPLACE EXG WITH - DARK BLUE SPANDREL GLASS - REF MATERIALS SCHED
GLZ 11	SOLEXIS TINTED INSULATED SPANDREL
GLZ 12	SOLEXIS TINTED INSULATED WITH FRIT
GLZ 13	SPANDREL GLASS - EXISTING TO REMAIN
GLZ 14	CLEAR GLASS - EXISTING TO REMAIN
+	PORTION OF CURTAINWALL TO BE DEMOLISHED - NEW ARCHERS ESTABLISHED TO TOP. REFERENCE PLAN AND ELEV FOR RECONSTRUCTION OF THIS AREA

FRAME TYPE	DESCRIPTION
SA	STEEL (HM) FRAME TYPE
AA	ALUMINUM (STOREFRONT) FRAME TYPE
7.5CA	7.5' CURTAINWALL FRAME TYPE WITH STRUCTURAL BRACE, REF. STRUCTURES
6CA	6' CURTAINWALL FRAME TYPE WITH STRUCTURAL BRACE, REF. STRUCTURES
CW	EXISTING CURTAINWALL



Revision	By	Appd	Date
15	AS	AS	10/17/19
Planned for Bidding and Construction			
Issued	KAL/ES	ES	2018.10.03

Permit-Seal

Client/Project
Dallas ISD
Franklin D. Roosevelt High School
BP# 15 ORG# 013
525 Bonnie View Rd
Dallas, TX 75203

Title
EXTERIOR ELEVATIONS

Project No. 214000470
Scale As indicated
Revision Drawing No.